

Using SSH Secure to Connect to Pegasus

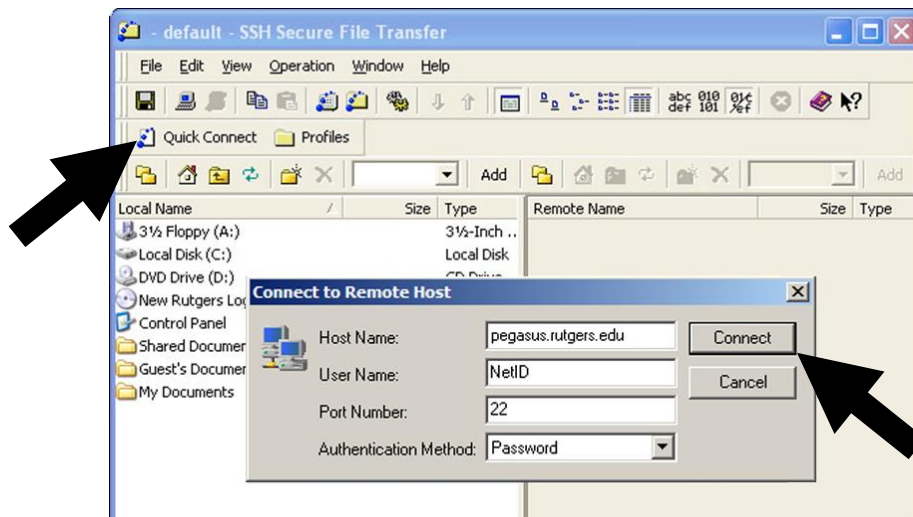
Quick Connect Method

1. Click the **Quick Connect** button.
2. Enter the appropriate information:

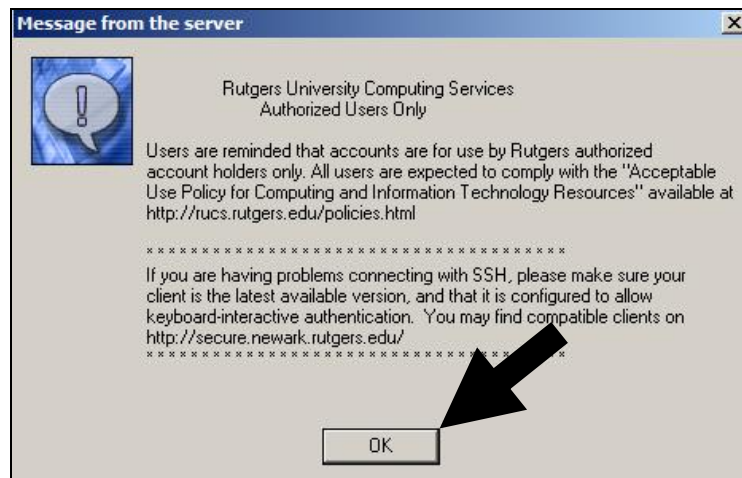
Host Name: pegasus.rutgers.edu

Username: Your Rutgers **NetID**

3. Select **Password**.
4. Click **Connect**.



5. Click **OK** to Authorized Users message.



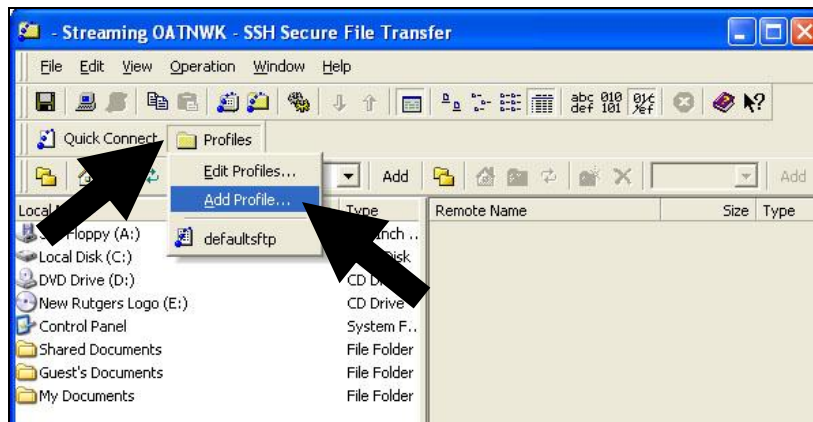
6. Enter your **NetID Password** and click **OK**.



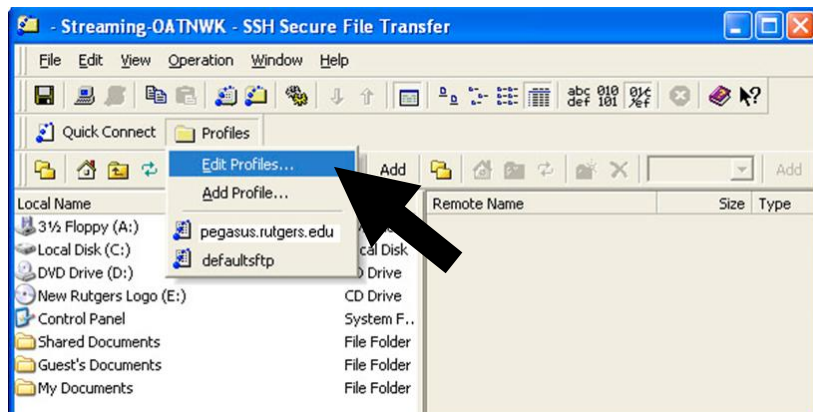
Setting Up a Profile in SSH Secure

If you plan to use Secure SSH regularly, it is recommended that you create a "profile" to save your settings.

1. From the **Profiles** menu, select **Add Profile**.



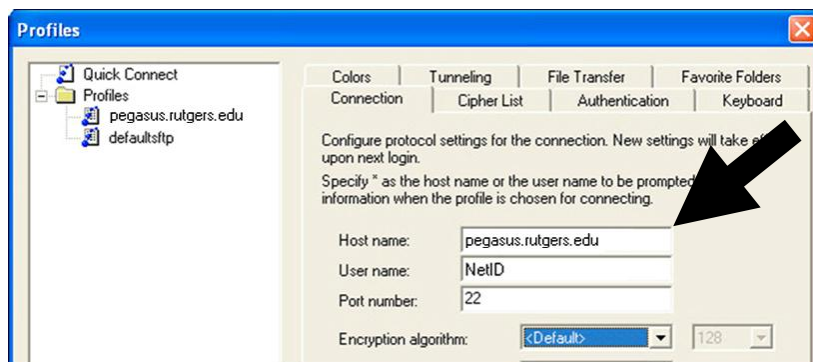
2. Enter an appropriate name in the **Add Profile** field.
3. Return to the **Profiles** menu, select **Edit Profile** (you may notice your new profile name is listed).



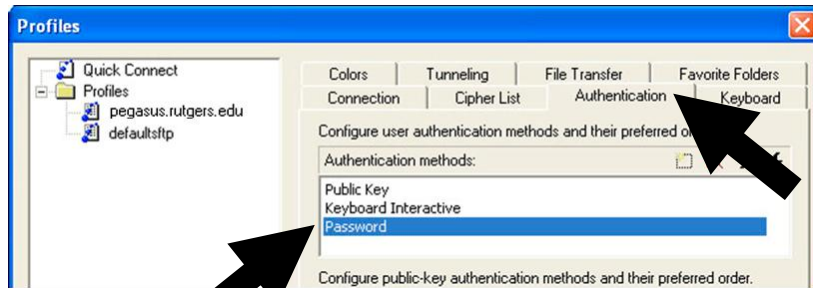
4. Select your profile on the left and enter the following info on the right:

Host Name: pegasus.rutgers.edu

Username: Your Rutgers NetID



5. From the **Authentication** tab, select **Password**.



6. Click **OK**.

Connecting to a Server Using a Profile in SSH Secure

1. From the **Profiles** menu, select the profile that you named above.



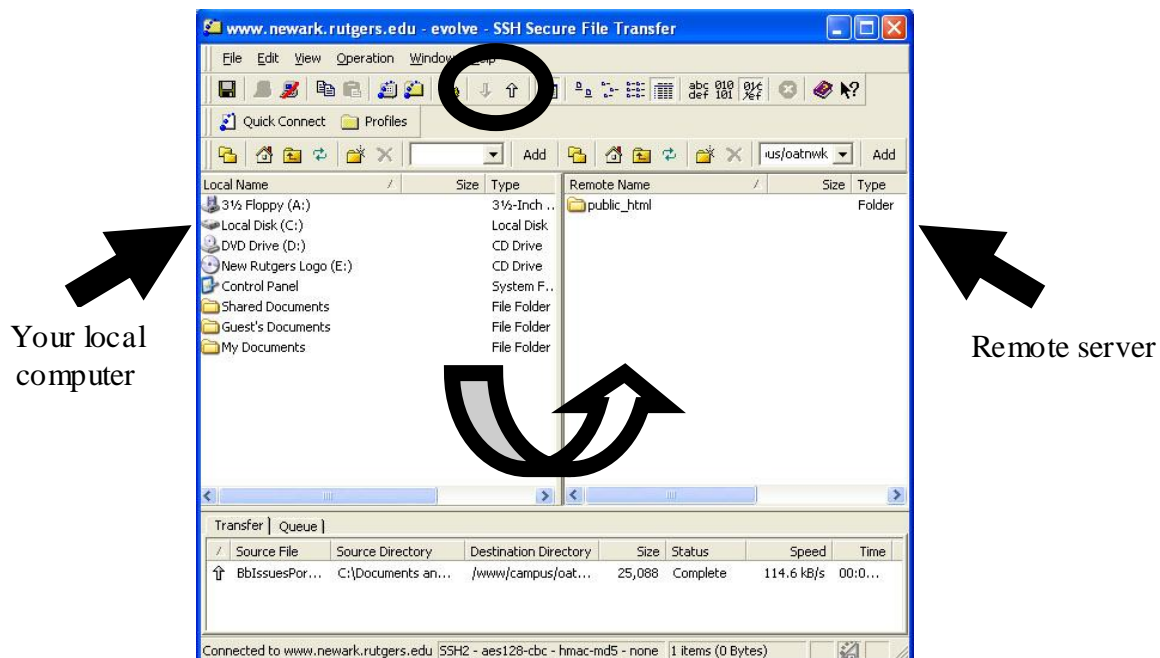
2. Click **OK**.

3. Enter **NetID Password**.

4. Click **OK**.

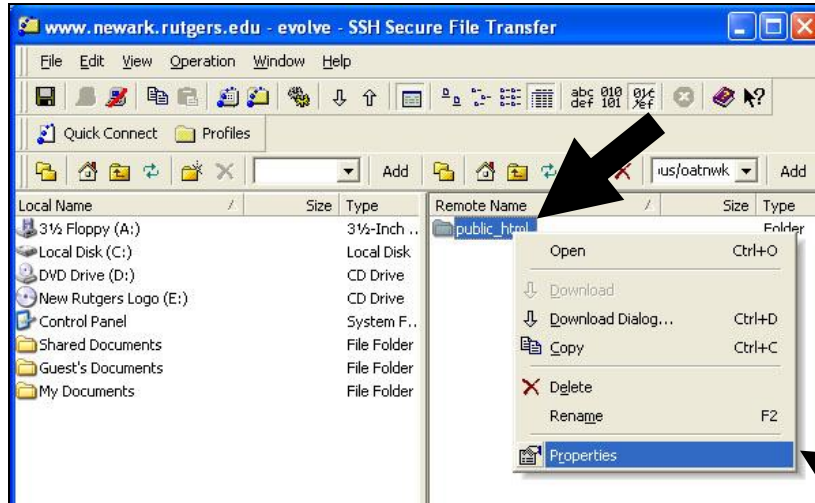
SSH Secure Interface

Your local computer will appear on the left while the server you are connected to will appear on the right. You can navigate through both locations as necessary. Files can be dragged and dropped between the windows. The arrow buttons also allow you to upload and download file.




Trouble with Permissions

You can check the permissions on any file or folder by **right-clicking** the item and selecting **Permissions** with a left-click. Make sure that **Read** access is checked for all users. You may want to simply use the file permission setting of **755**.



Setting the Default Permissions

You can change the default permissions when uploading by clicking on the **Settings** button  and then **File Transfer - Advanced**. You can set the **Default File and Directory Permissions** to **755**.

