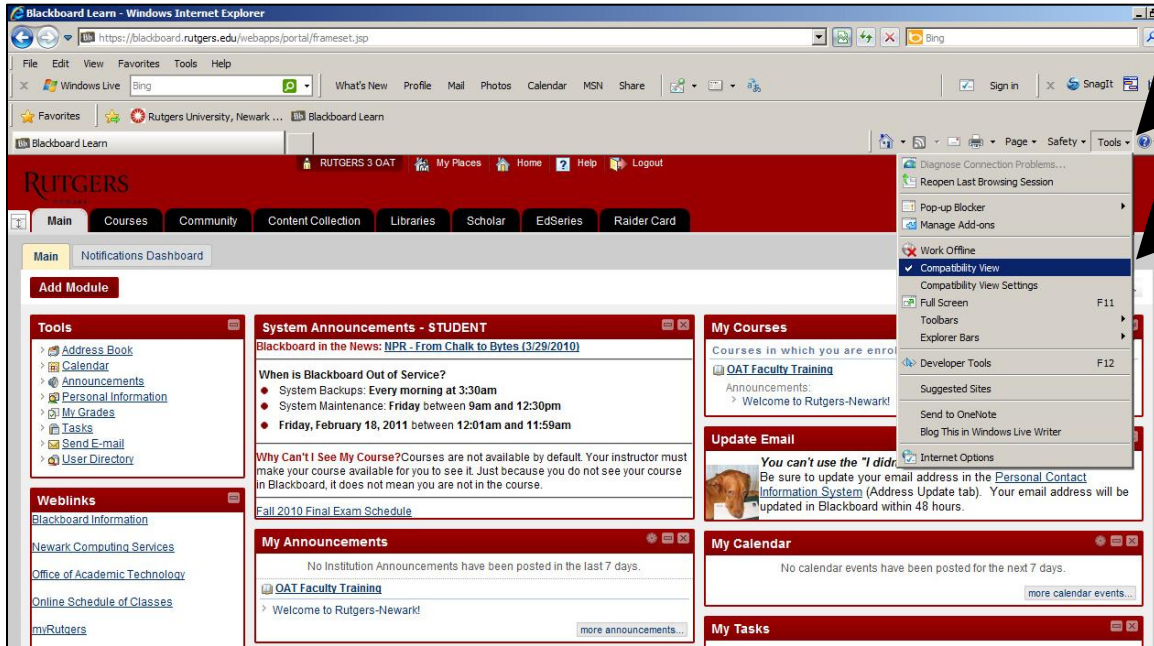


## Running Blackboard in Compatibility Mode – Internet Explorer 8

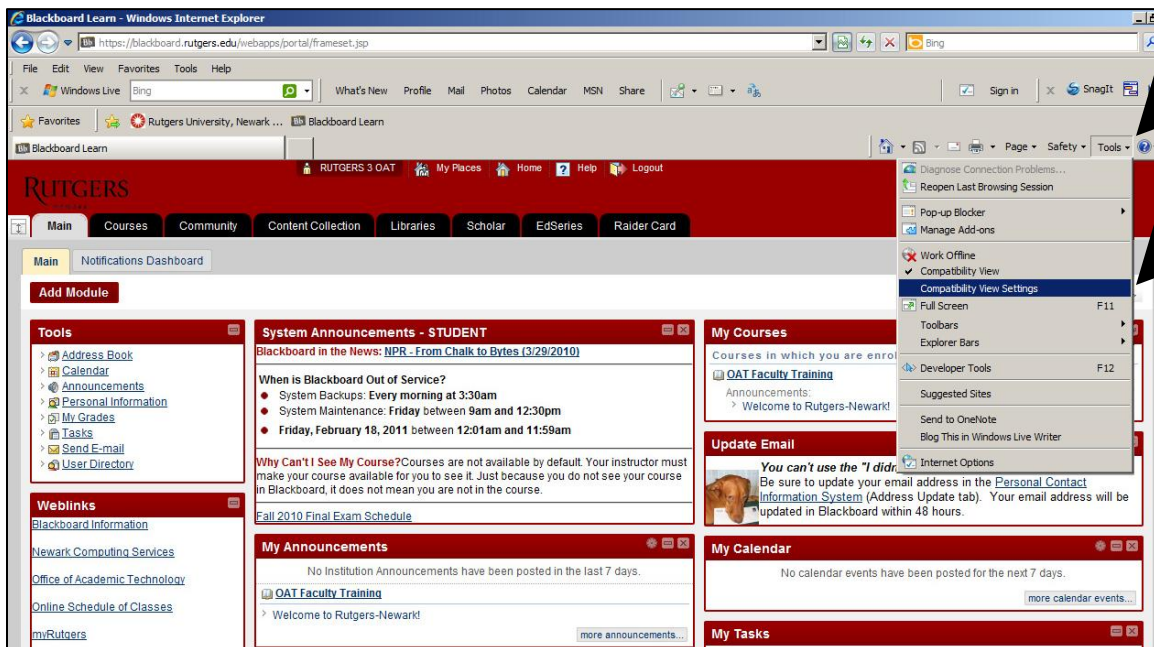
To ensure that Blackboard works well in Internet Explorer 8, it is recommended that you use **Compatibility View**.

- From the **Tools** menu at the top right, select **Compatibility View**.

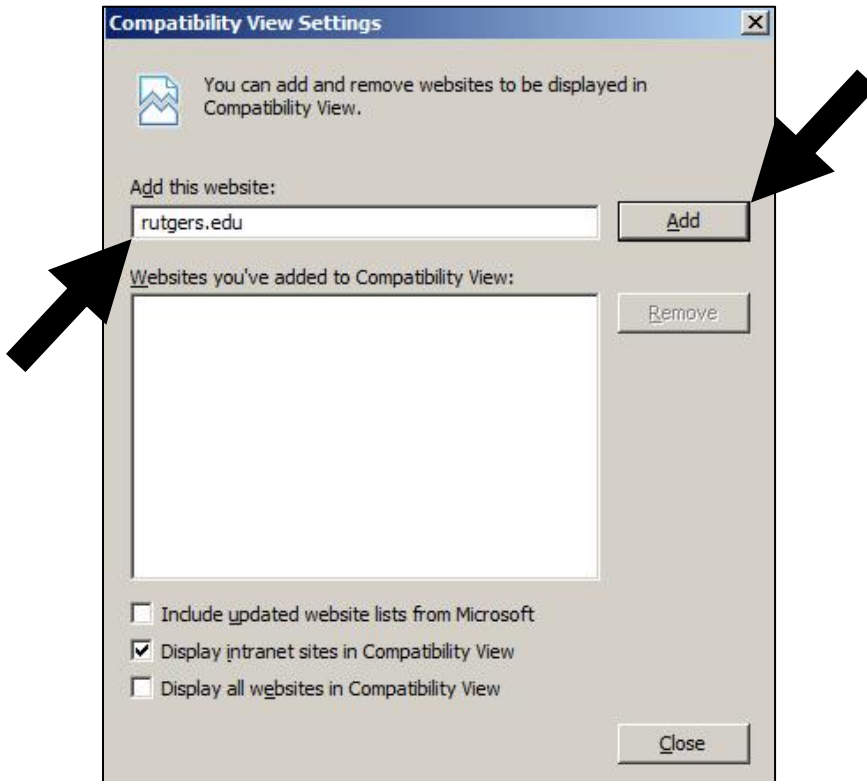


You may want to change your **Compatibility View Settings** so that this option is used whenever you access a particular website.

- From the **Tools** menu at the top right, select **Compatibility View Settings**.



- Type in **rutgers.edu** and click the **Add** button.



- Click the **Close** button.

